

WELCOME

Agenda
October 22, 2014
Ashlawn School Safe Routes Projects

8th Rd. N. Connection to Wilson Boulevard

N. Montague St. and 5th Rd N. Improvements

N. Manchester St. and 5th Rd. N. Improvements

Four Mile Trail Connections to N. Manchester St.

Manchester St. Sidewalk Widening

Questions?

Next Steps

Ashlawn School Safe Routes Projects



There is no sidewalk on 8th Road west of the Upper Lot.



The stairs connecting 8th Road to Wilson Boulevard are steep and not well lit.



**The only accessible pathway between
Wilson Boulevard and 8th Road is via
the Dominion Hills Pool
parking lot.**



Proposed 8th Road N. Trail Connection to Wilson Boulevard

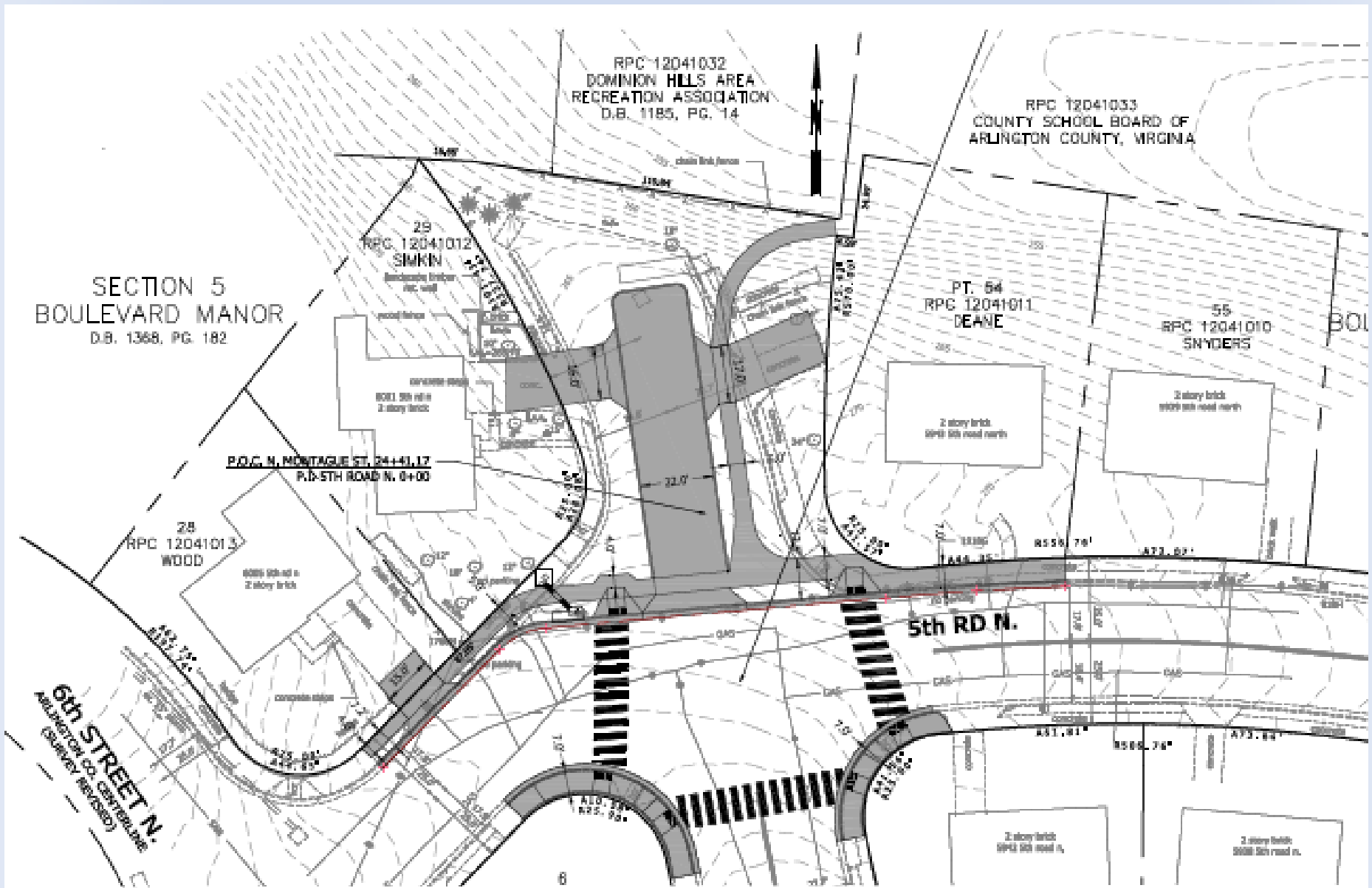


N. Montague St. and 5th Rd. N.



Unnecessary amount of pavement

Proposed Improvements at N. Montague St. and 5th Rd. N.



N. Manchester St. - Existing 4' Wide Sidewalk



Ashlawn School Safe Routes Projects



8th ROAD N.

HRC 12041033
TY SCHOOL BOARD OF
STON COUNTY, VIRGINIA

210

206.15

205.19

204.02

215.57

25.00'

17.3'

25.00'

N. MANCHESTER STREET
ARLINGTON CO. CENTERLINE

PROPOSED INFILTRATION/
DRY WELL AREA

PROPOSED GRASS SWALE

PROPOSED CONCRETE DRIVEWAY APRON AND
SIDEWALK UNDER CONSTRUCTION (BY OTHERS)

LOD

LOD

LOD

LOD

PROPOSED 5' x 5' DRAIN PIT

PROPOSED 4" THICK CONCRETE SIDEWALK,
ARL. STD. R=2.0

PROPOSED 4" THICK CONCRETE SLAB (25' x 8').
CONSTRUCT PER ARL. STD. R=2.0 FOR STANDARD
CONCRETE SIDEWALK,

PROPOSED ASPHALT MULTIPURPOSE TRAIL
ARL. STD. R=4.1

BLUEMONT PARK
RPC 12030080
ARLINGTON COUNTY BOARD

8.0'

8.0'

8.0'

6.0'

201

205.55

204.02

203.00

202.00

201.00

200.00

199.00

198.00

197.00

196.00

195.00

194.00

193.00

192.00

191.00

190.00

189.00

188.00

187.00

186.00

185.00

184.00

183.00

182.00

181.00

180.00

179.00

178.00

177.00

176.00

175.00

174.00

173.00

172.00

171.00

170.00

169.00

168.00

167.00

166.00

165.00

164.00

163.00

162.00

161.00

160.00

159.00

158.00

157.00

156.00

155.00

154.00

153.00

152.00

151.00

150.00

149.00

148.00

147.00

146.00

145.00

144.00

143.00

142.00

141.00

140.00

139.00

138.00

137.00

136.00

135.00

134.00

133.00

132.00

131.00

130.00

129.00

128.00

127.00

126.00

125.00

124.00

123.00

122.00

121.00

120.00

119.00

118.00

117.00

116.00

115.00

114.00

113.00

112.00

111.00

110.00

109.00

108.00

107.00

106.00

105.00

104.00

103.00

102.00

101.00

100.00

99.00

98.00

97.00

96.00

95.00

94.00

93.00

92.00

91.00

90.00

89.00

88.00

87.00

86.00

85.00

84.00

83.00

82.00

81.00

80.00

79.00

78.00

77.00

76.00

75.00

74.00

73.00

72.00

71.00

70.00

69.00

68.00

67.00

66.00

65.00

64.00

63.00

62.00

61.00

60.00

59.00

58.00

57.00

56.00

55.00

54.00

53.00

52.00

51.00

50.00

49.00

48.00

47.00

46.00

45.00

44.00

43.00

42.00

41.00

40.00

39.00

38.00

37.00

36.00

35.00

34.00

33.00

32.00

31.00

30.00

29.00

28.00

27.00

26.00

25.00

24.00

23.00

22.00

21.00

20.00

19.00

18.00

17.00

16.00

15.00

14.00

13.00

12.00

11.00

10.00

9.00

8.00

7.00

6.00

5.00

4.00

3.00

2.00

1.00

0.00

100'

200'

300'

400'

500'

600'

700'

800'

900'

1000'

1100'

1200'

1300'

1400'

1500'

1600'

1700'

1800'

1900'

2000'

2100'

2200'

2300'

2400'

2500'

2600'

2700'

2800'

2900'

3000'

3100'

3200'

3300'

3400'

3500'

3600'

3700'

3800'

3900'

4000'

4100'

4200'

4300'

4400'

4500'

4600'

4700'

4800'

4900'

5000'

5100'

5200'

5300'

5400'

5500'

5600'

5700'

5800'

5900'

6000'

6100'

6200'

6300'

6400'

6500'

6600'

6700'

6800'

6900'

7000'

7100'

7200'

7300'

7400'

7500'

7600'

7700'

7800'

7900'

8000'

8100'

8200'

8300'

8400'

8500'

8600'

8700'

8800'

8900'

9000'

9100'

9200'

9300'

9400'

9500'

9600'

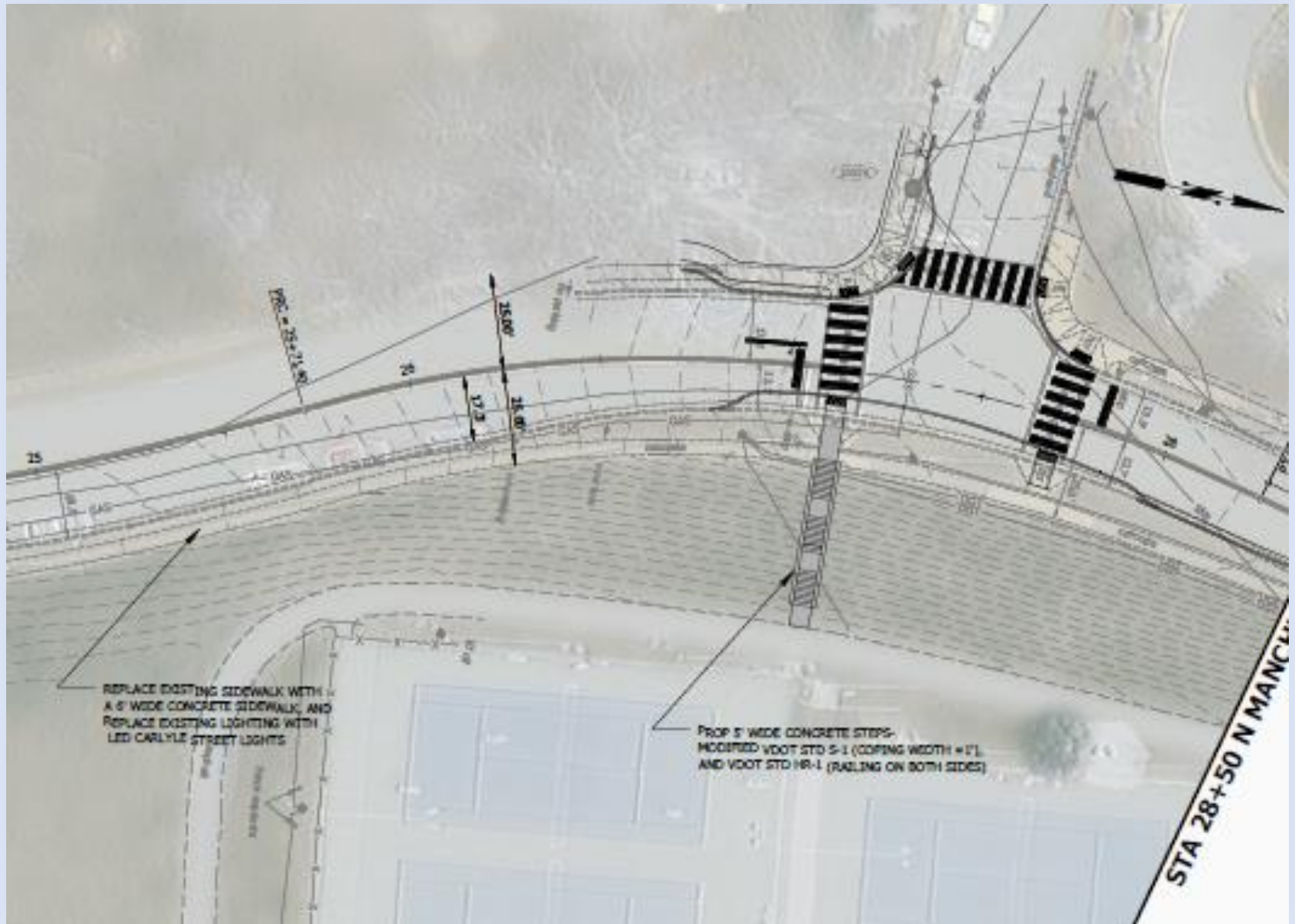
9700'

9800'

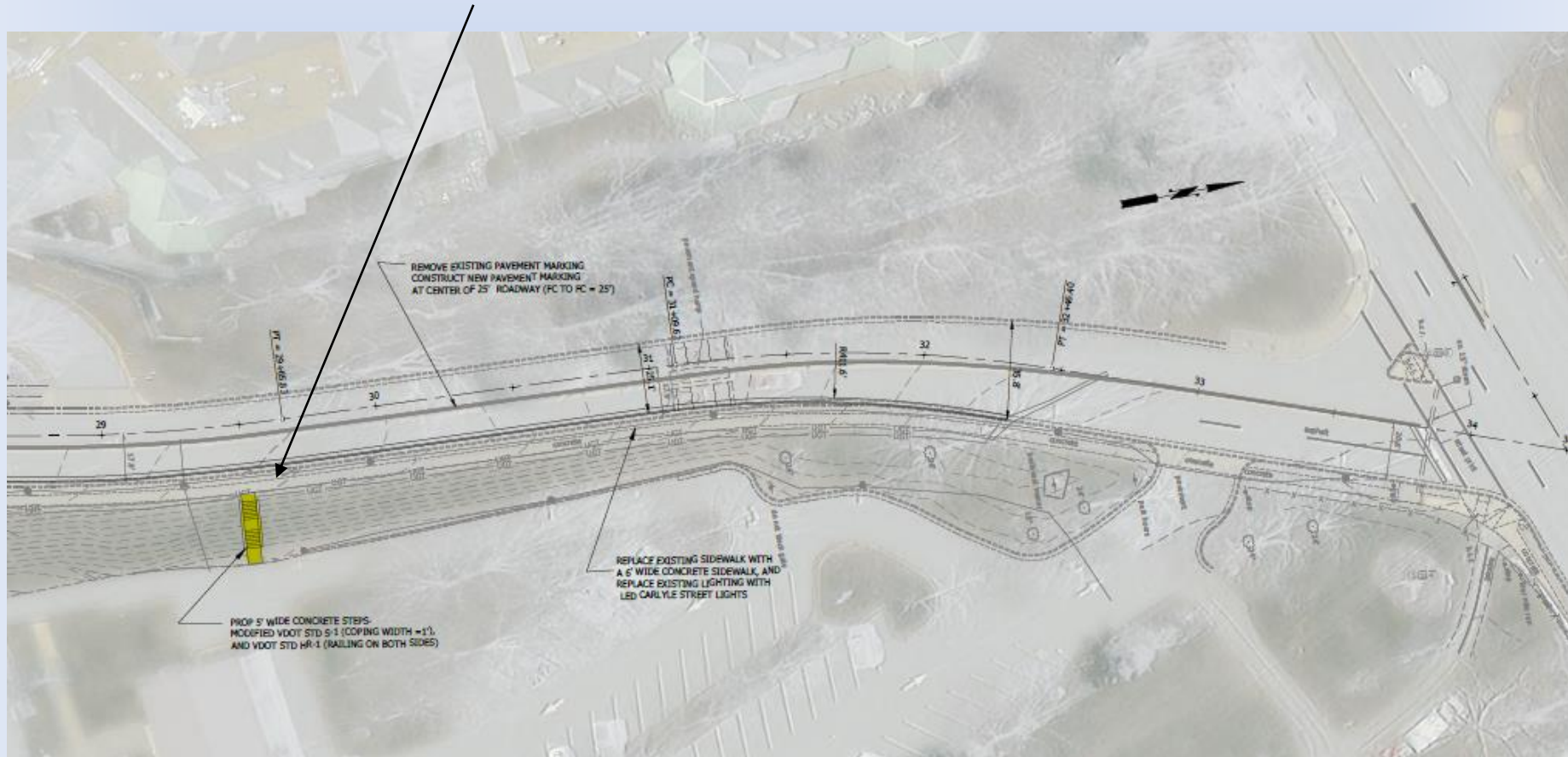
9900'

10000'

Proposed Connection from Four Mile Run Trail to 8th Road N.



Proposed Connection from Parking Lot to N. Manchester St. Sidewalk



N. Manchester Street and 5th Road N. Intersection



The sidewalk on Manchester Street adjacent to Bluemont park does not comfortably accommodate pedestrian volumes during arrival and dismissal. Also, there is no connection from the Bluemont trail to Manchester St.



Ashlawn School Safe Routes Projects



Questions?

THANK YOU

